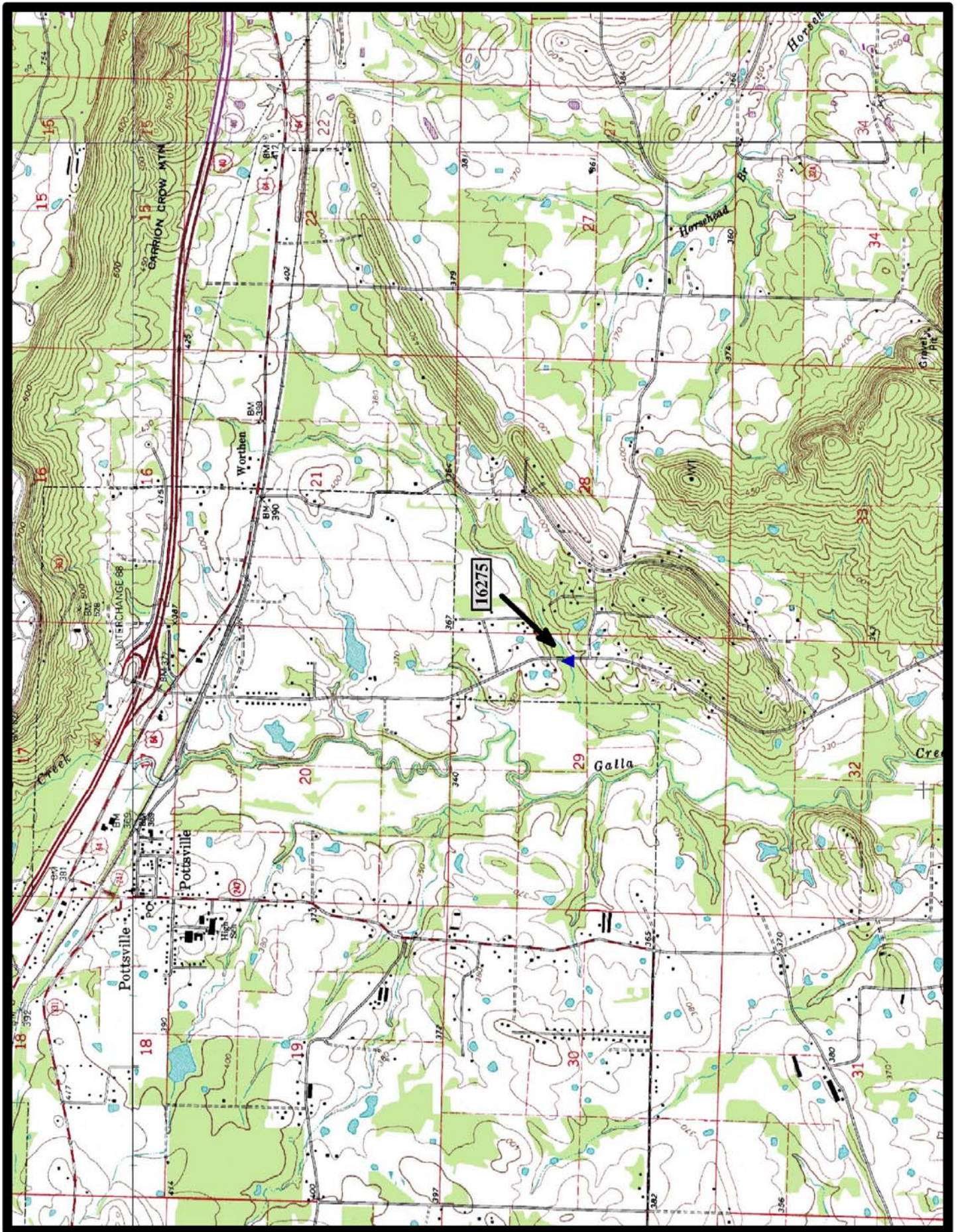




HISTORIC BRIDGE #16275
PINE RIDGE ROAD (Co. Rd. 43)
POPE COUNTY
STEEL MULTI-BEAM
CROSSES - UNNAMED CREEK
DATE OF CONSTRUCTION - 1941
BUILDER - WORKS PROGRESS ADMINISTRATION (WPA)
HISTORIC BRIDGE INVENTORY DATE - 2010
SHPO NUMBER - PP0278
HAER NUMBER -
DATE LISTED ON NATIONAL REGISTER -
LAT./LONG. 35:13:37.40, -93:02:00.22

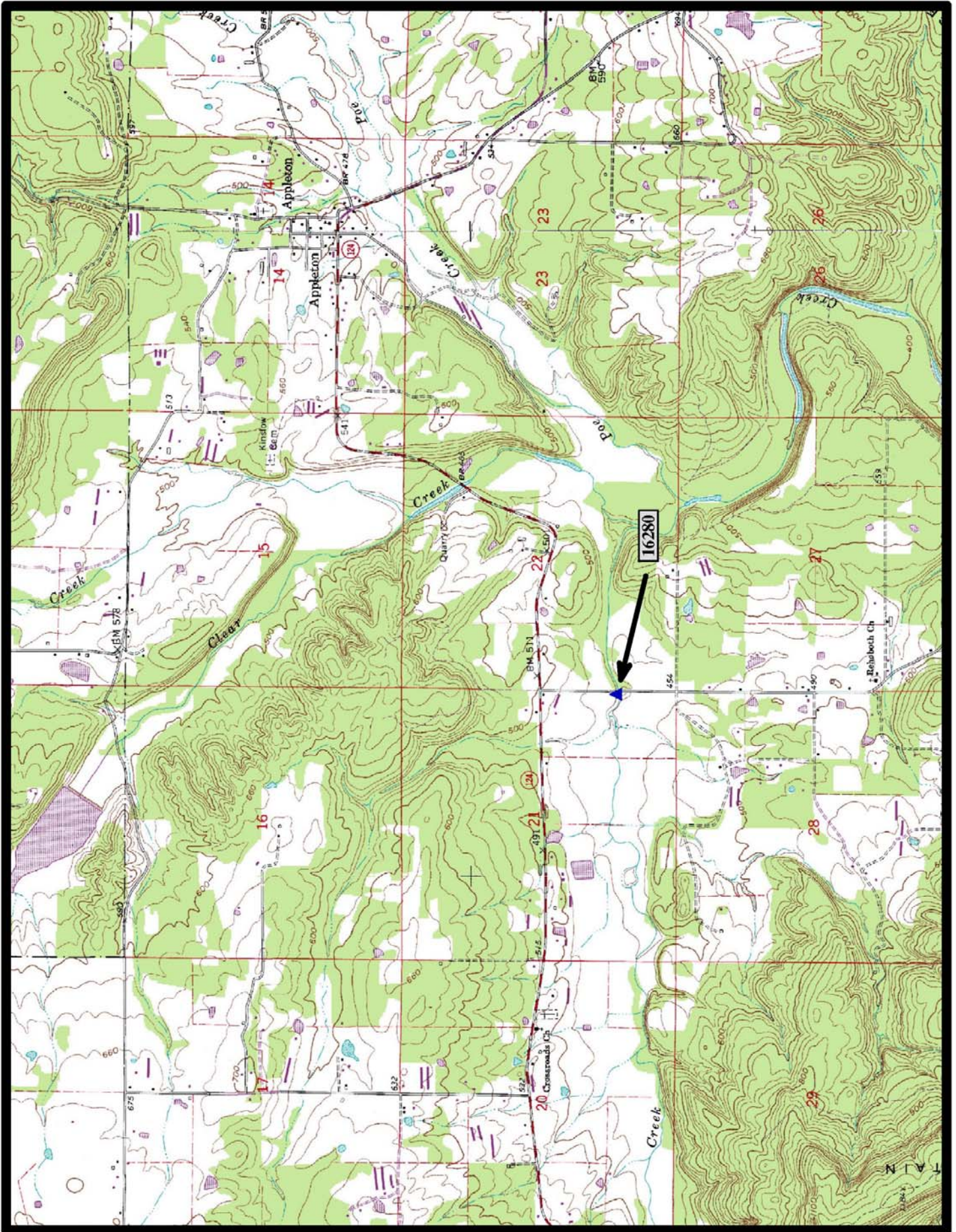


←
North

Holla Bend 7.5 min. Quad



HISTORIC BRIDGE #16280
BUTTERMILK ROAD (Co. Rd. 48)
POPE COUNTY
STEEL MULTI-BEAM
CROSSES - HACKERS CREEK
DATE OF CONSTRUCTION - 1941
BUILDER - WORKS PROGRESS ADMINISTRATION (WPA)
HISTORIC BRIDGE INVENTORY DATE - 2010
SHPO NUMBER - PP0282
HAER NUMBER -
DATE LISTED ON NATIONAL REGISTER -
LAT./LONG. 35:24:32.39, -92:54:17.66

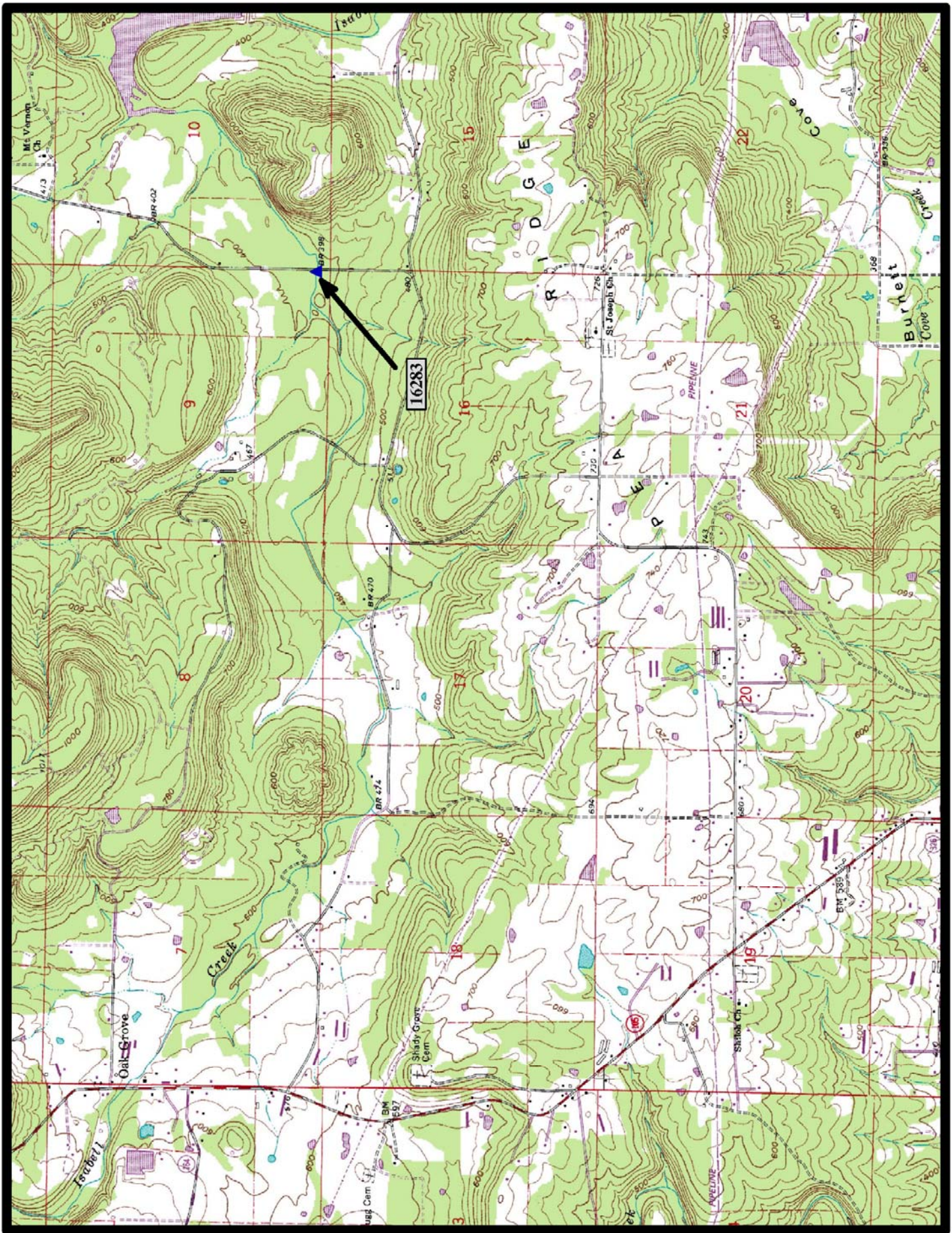


←
North

Hector 7.5 min. Quad



HISTORIC BRIDGE #16283
BUTTERMILK ROAD (Co. Rd. 48)
POPE COUNTY
STEEL MULTI-BEAM
CROSSES - UNNAMED CREEK
DATE OF CONSTRUCTION - 1941
BUILDER - WORKS PROGRESS ADMINISTRATION (WPA)
HISTORIC BRIDGE INVENTORY DATE - 2010
SHPO NUMBER - PP0285
HAER NUMBER -
DATE LISTED ON NATIONAL REGISTER -
LAT./LONG. 35:20:54.66, -92:54:21.88

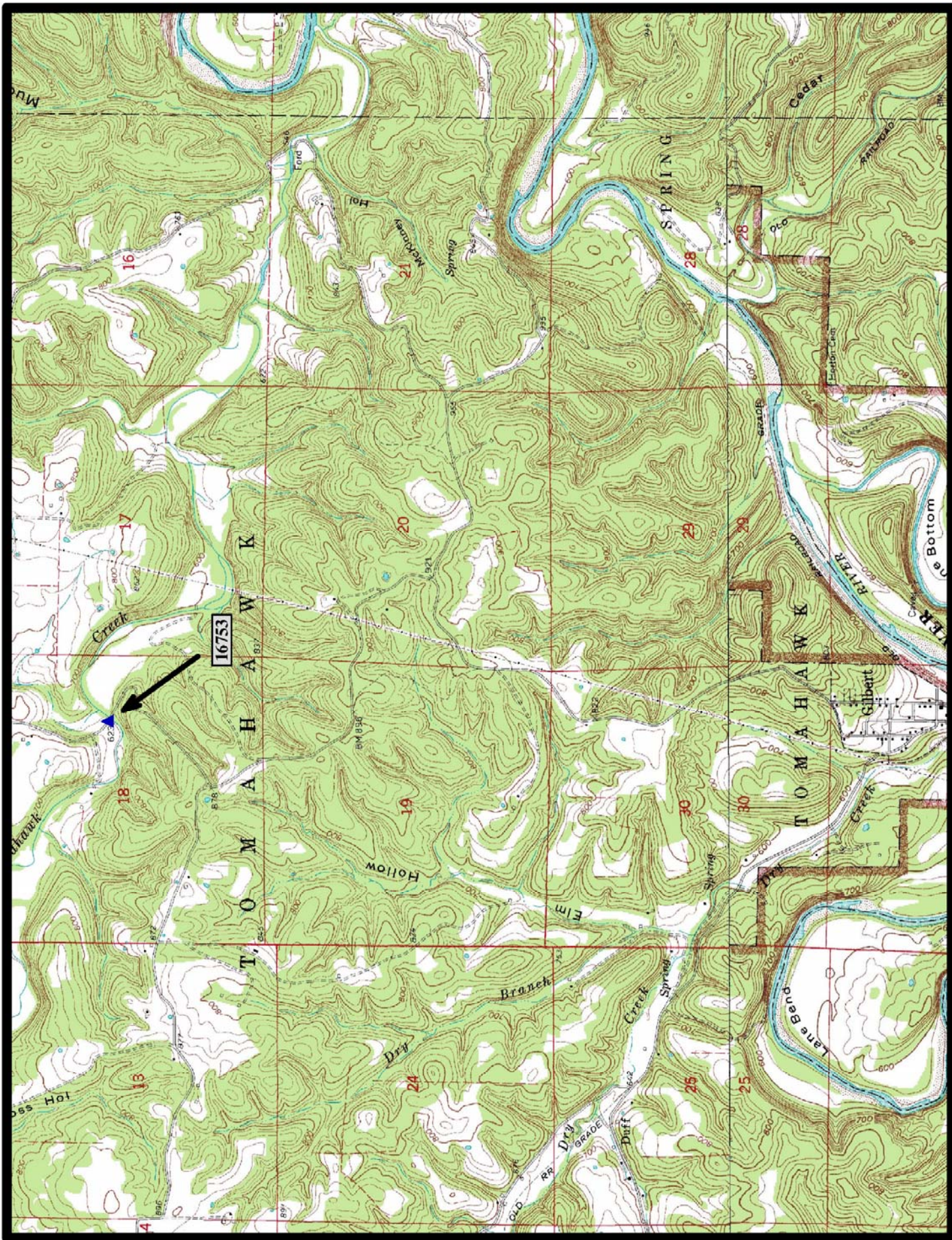


←
North

Moreland 7.5 min. Quad



HISTORIC BRIDGE #16753
TOMBSTONE SLAB ROAD (Co. Rd. 32)
SEARCY COUNTY
STEEL MULTI-BEAM
CROSSES - TOMAHAWK CREEK
DATE OF CONSTRUCTION - 1940
BUILDER - WORKS PROGRESS ADMINISTRATION (WPA)
HISTORIC BRIDGE INVENTORY DATE - 2010
SHPO NUMBER -
HAER NUMBER -
DATE LISTED ON NATIONAL REGISTER -
LAT./LONG. 36:01:57.27, -92:42:59.21

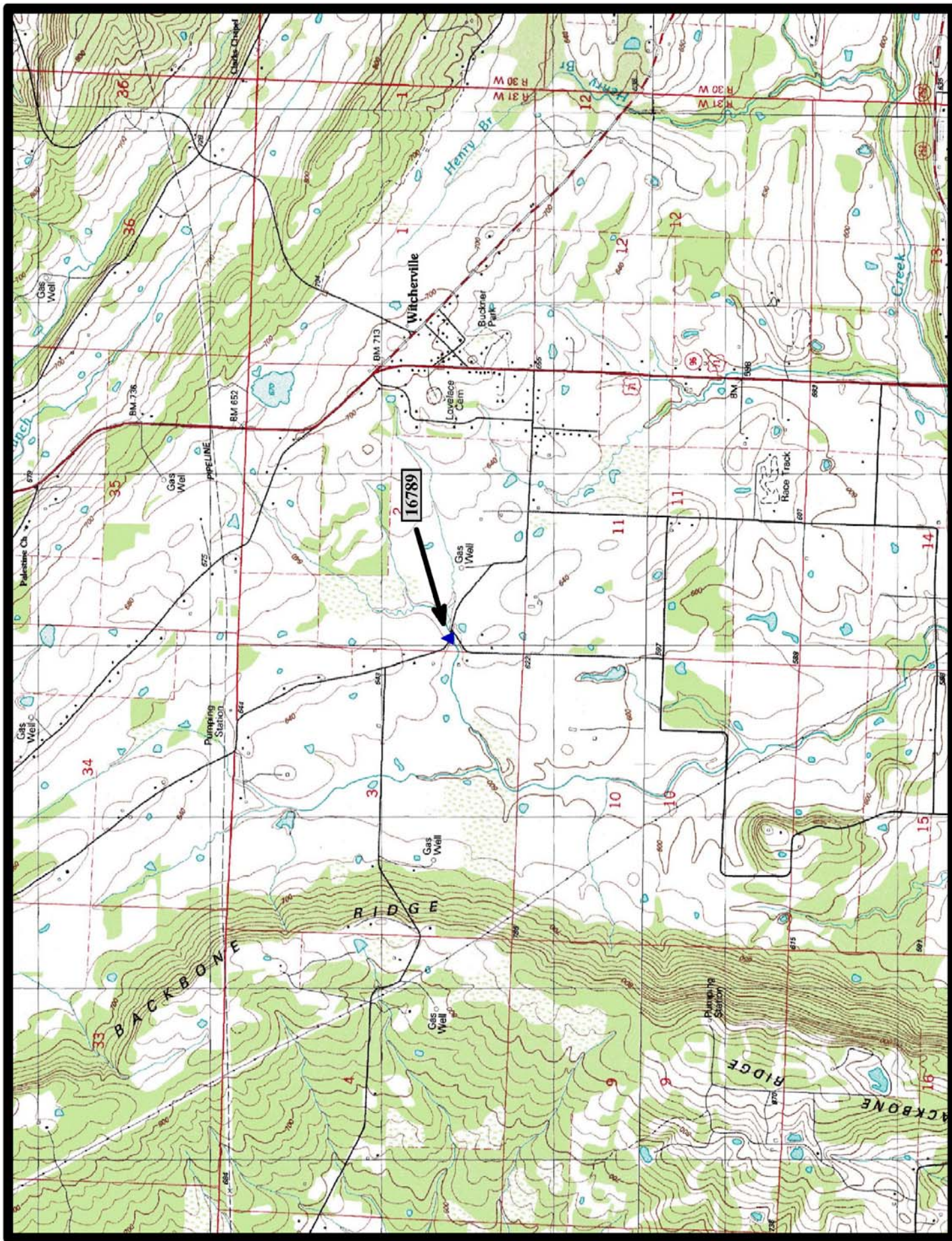


↑
North

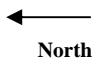
Maumee 7.5 min. Quad



HISTORIC BRIDGE #16789
NICKELTOWN ROAD (Co. Rd. 37)
SEBASTIAN COUNTY
STEEL MULTI-BEAM
CROSSES - UNNAMED CREEK
DATE OF CONSTRUCTION - 1940
BUILDER - WORKS PROGRESS ADMINISTRATION (WPA)
HISTORIC BRIDGE INVENTORY DATE - 2010
SHPO NUMBER -
HAER NUMBER -
DATE LISTED ON NATIONAL REGISTER -
LAT./LONG. 35:08:07.34, -94:17:01.41



Greenwood 7.5 min. Quad



North